

Middle Township Middle School

6th Grade Parent Orientation

2024-2025

Mr. Jeff Ortman, Principal

Mr. Andre Hodges, Vice Principal



Organization of the School

6th grade

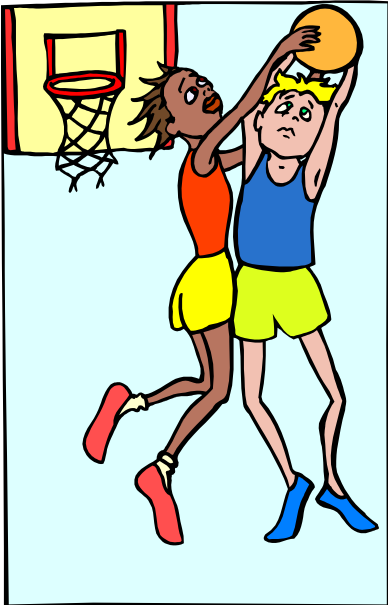


7th grade

8th grade

56 minute Academic classes- Math, Literacy, Social Studies,& Science
44 minute Special Areas, Gym
40 minute Panther Block
Lunch 12:07-12:37.

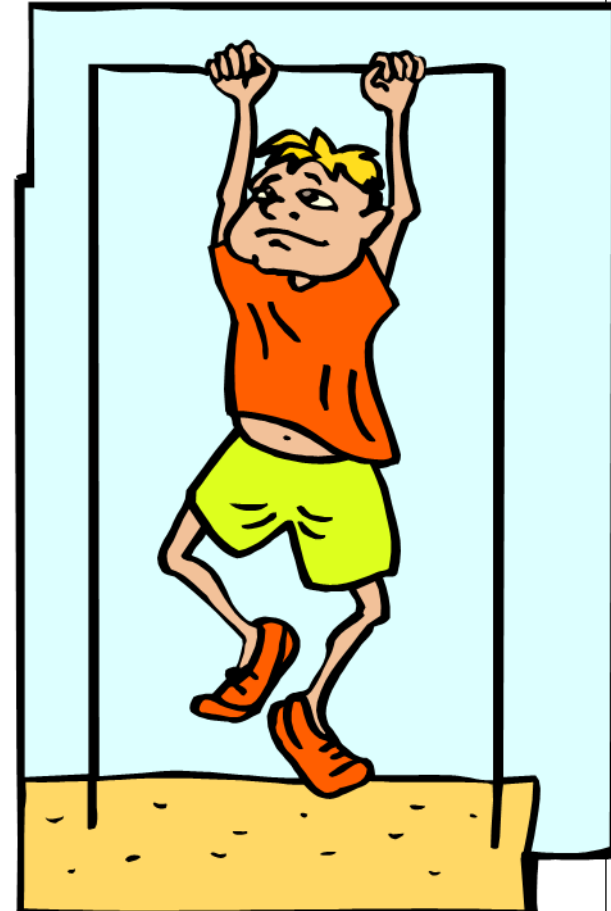
Physical Education & Health



Students take gym every day.

Students do not have to change for gym but must have appropriate footwear.

Health Classes will take place one marking period during the school year.



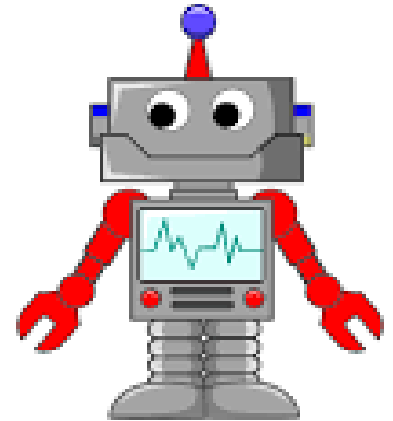


Panther Block

- 7:50-8:30 Daily
- Students will choose their class based on their interests the first week of school.
- Intervention Period as needed.
- Provides opportunity for students to get in the building and doing something that interests them to “warm up” for academic classes.

Special Areas

- STEM/Robotics
- Music
- Computers
- Art
- Spanish



Middle School STEM/Esports Lab



Attendance

- School starts at 7:45 a.m. and ends at 2:18 p.m.
Cafeteria opens at 7:20 a.m.
- Report to the office if you are late-7:45.
- Strive for “Perfect Attendance”.
- Please plan vacations around school holidays/breaks.
- Please help us to ensure your child(ren) come to school every day, on time, and ready to learn.



BEFORE SCHOOL

- Students are **not** to arrive on campus before 7:20 a.m.
- Students eating breakfast will go to the cafeteria as soon as they come into the building.



TO AND FROM SCHOOL

- Drop off through the Media Center doors by 7:45 and pick up 2:18 at the parent pick up circle.

- Walkers-Meet in the cafeteria following dismissal. Written permission is needed to be on the walkers list. Teachers will release students after buses have pulled out.



Sports and Afterschool Clubs

- Step
- Pink Panthers
- Robotics
- STEM
- Drama
- UYG
- Student Council
- Band
- Newspaper
- Lego
- Homework
- Art
- Garden
- Success

Fall-

Boys & Girls Soccer
Cross Country- Co-ed
Girls Field Hockey

Winter-

Boys & Girls Basketball
Wrestling
Cheerleading
Volleyball

Spring-

Baseball & Softball
Track and Field

*Physicals (yearly), grades
(Passing), concussion
test, health history (Every 60
days), free of obligations, &
attend full day

Sports Physicals

All students must have a physical to participate in sports before the school year begins. All physical paperwork is done through R School Today.

Sports Physicals can be completed by visiting our website under the Athletics/Clubs tab.

Forms available on the way out today!

Please be sure this information is completed and up to date before school starts if your child plans on trying out for a fall sport: Field Hockey, Boys Soccer, Girls Soccer and Cross Country.



National Junior Honor Society

Advisor: Mrs. Connie Chabok

- <https://middleschool.middletownshippublicschools.org/students-and-parents/national-junior-honor-society/>



Leadership
Character
Service
Scholarship
Citizenship



CAFETERIA

- Several options available daily in the cafeteria.
- Very important to fill out free/reduced lunch forms when you get them as soon as possible. Eligibility criteria has changed so you may be eligible even if you have not been in the past.
- Lunch menus on the website.
- Snacks available for purchase.



Cell Phones and Other Devices

- Cell phones must be turned off and put away in student lockers at the beginning of the day and retrieved at the end of the day.
- Significantly cuts down on discipline and other social concerns.
- Failure to follow may result in the phone being sent to the office.



Middle School PAWS Program



P.A.W.S.

PRACTICE SAFETY. ACT RESPONSIBLY. WORK TOGETHER. SHOW RESPECT.

ACHIEVEMENTS

Gold Card

1. No Grades lower than a C
2. Accumulation of no more than 3 absences
3. Accumulation of no more than 3 tardies
4. Maximum of 2 discipline referrals
5. No external suspensions

Blue Card

1. No grades lower than a B
2. Accumulation of no more than 2 absences
3. Accumulation of no more than 2 tardies
4. No discipline referrals

Red Card

1. No Grades lower than a C
2. Accumulation of no more than 3 absences
3. Accumulation of no more than 3 tardies
4. Maximum of 1 discipline referral
5. No internal or external suspensions

Purple Card

1. No Grades lower than a C
2. Accumulation of no more than 3 absences
3. Accumulation of no more than 3 tardies
4. Maximum of 2 discipline referrals
5. No external suspensions

REWARDS

1. Invitation to all P.A.W.S. Events
2. Two Homework Exemptions (Excludes projects and/or take home assessments)
3. Preferred Lunch Line Status
4. One excused lateness to school

1. Invitation to all P.A.W.S. Events
2. Two Homework Exemption (Excludes projects and/or take home assessments)

1. Invitation to all P.A.W.S. Events
2. One Homework Exemption (Excludes projects and/or take home assessments)

1. Invitation to all P.A.W.S. Events
2. One Late Homework Exemption (Excludes projects and/or take home assessments)

Support Services

- Counselors: Mrs. DeCamillo, Mrs. DeRose, Mr. McCormick
- Nurse: Mrs. Kane
- Child Study Team: Mrs. Majane and Mrs. Zuzulock
- Custodians: Mr. Perez, Mr. Phillips, Mrs. Shelton, Mrs. Whitaker
- Secretaries: Mrs. Hearon, Mrs. Major, Mrs. Seitz



6th Grade Immunization Requirements

- Per NJ Department of Health, 6th Grade Students are required to have proof of vaccination for the following before school starts:
 - tDap and Meningococcal Vaccines
 - You may fax the information to 609-465-5524 or mail to 300 East Pacific Avenue, CMCH, NJ 08210

Important Dates

- Get your students to get involved!
- September 16- Back to School Night
- September 17- Referendum Vote 4-8 pm



School Website and Facebook

- <https://middletownshippublicschools.org/>
- Bright Arrow Text Messages
 - Text YES to 79041
- Like us on Facebook

Middle Township Middle School

Middle Township Middle School

Thank you for attending !

Let's enjoy the BBQ!!!

